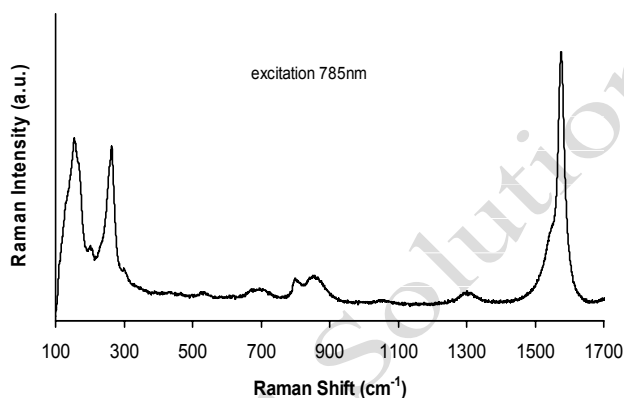


HIGH PURITY SINGLE WALLED CNT DATASHEET

The single walled carbon nanotubes (SWCNTs) are produced by a **state-of-the-art** proprietary chemical vapor deposition (CVD) process providing the highest quality nanotubes available on the market.



Raman data:

The relative intensity between the G band ($\sim 1580 \text{ cm}^{-1}$) representing crystalline carbon and the D-band ($\sim 1350 \text{ cm}^{-1}$) found in amorphous carbon is greater than 10 times indicating a high quality SWCNT. The peaks located around 200 cm^{-1} are the radial breathing modes (RBM).

	Specifications	Test Method
External Diameter	$\sim 1.3 \text{ nm}$	TEM, Raman
Length	$0.5 \sim 40 \text{ }\mu\text{m}$	TEM, SEM
Purity	$> 90\%$	TGA, SEM
Amorphous Carbon	$< 5\%$	TGA
Ash	$< 2 \text{ wt}\%$	TGA
Specific Surface Area	$300 - 600 \text{ m}^2/\text{g}$	BET